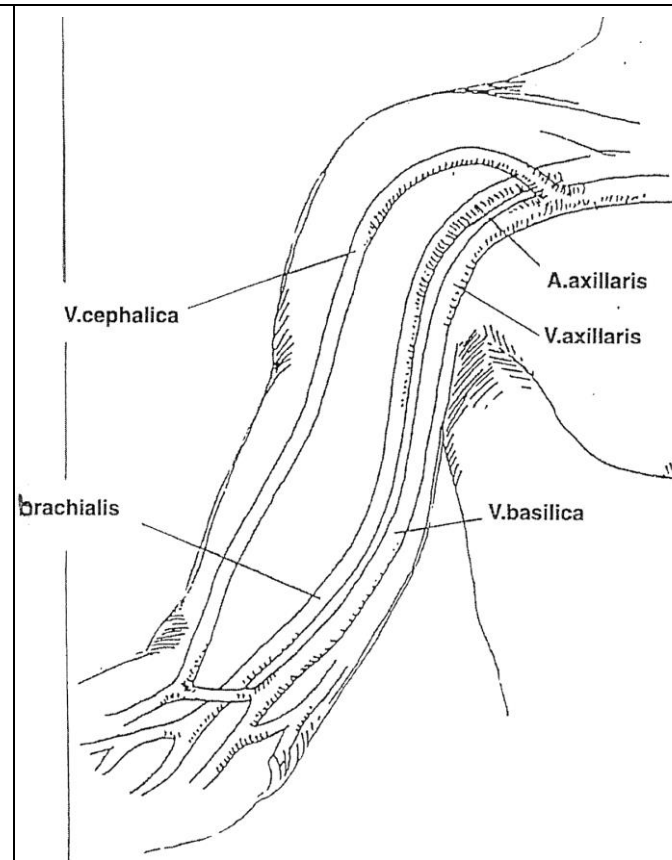
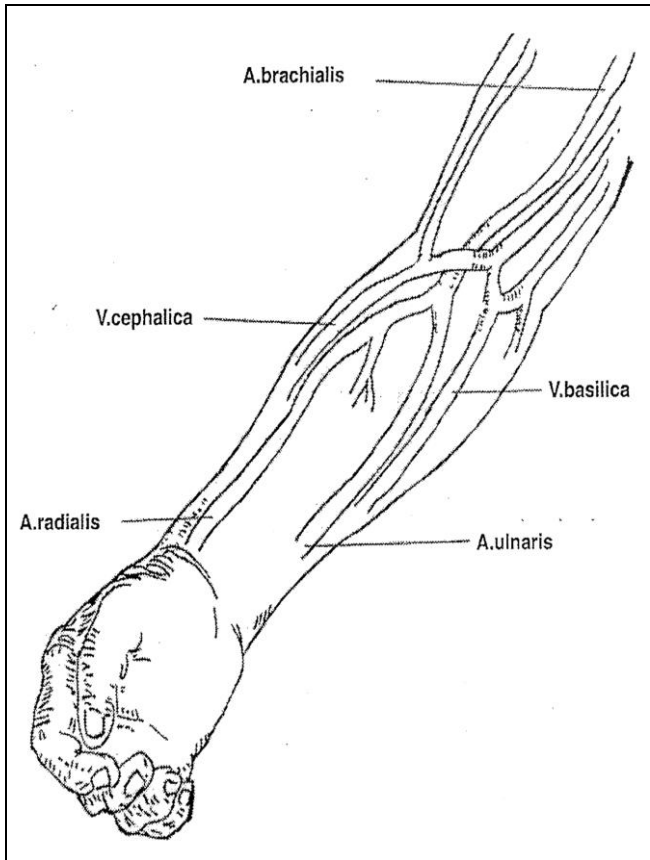


Dialysestation Shunt sketch right side

Name:

First name:

Date of birth:


Type of shunt:

- Own vessels
- synthetic-graft
- own vessel with interponat

Surgeon:

Date of surgery:

First puncture:

Type of puncture:

- rope ladder
- area puncture
- button hole
- selfpuncture

pressure after removing

- single handed
- ribbon

Type of puncture needle:.....

Type of dressing after removing:

- selfadhesive pad:.....
- Compress.....
- brace:.....

Please mark the puncture lines:

- red pointed line ... = arterial line of puncture
- blue dashed line ---- = venous line of puncture
- black lines ///// = no puncture in this area

For button hole puncture please describe the correct arm- and handposition, the depth and direction of puncture. If available, please supply a photograph.

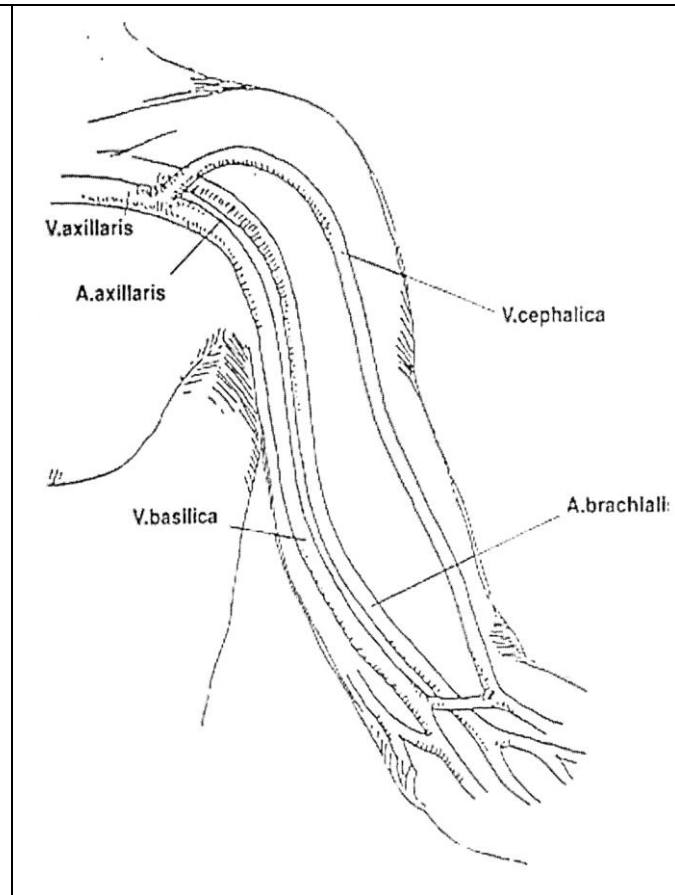
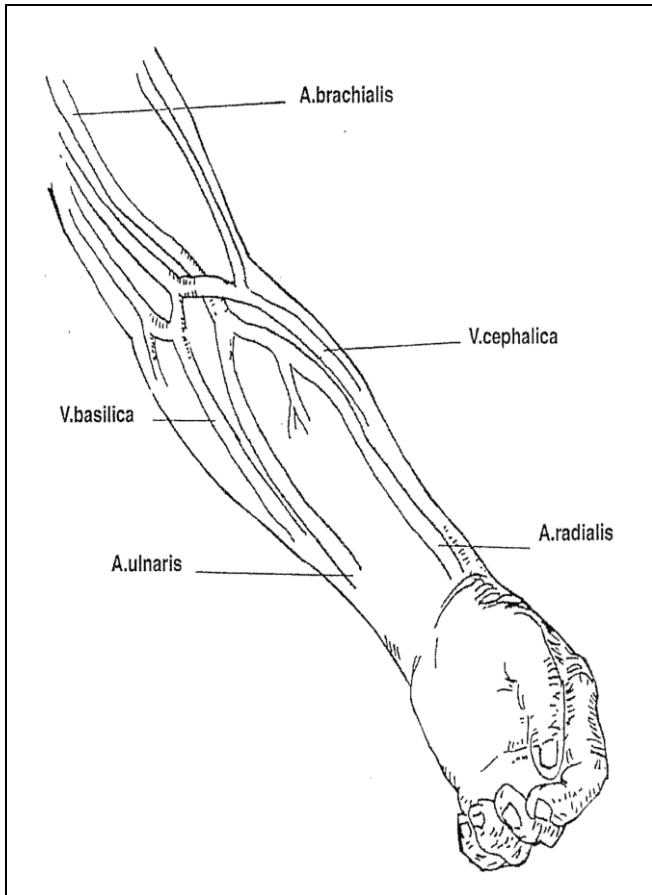
Additional information about the shunt situation:
Complications?

Dialysestation Shunt sketch left side

Name:

First name:

Date of birth:


Type of shunt:

- Own vessels
- synthetic-graft
- own vessel with interponat

Surgeon:

Date of surgery:

First puncture:

Type of puncture:

- rope ladder
- area puncture
- button hole
- selfpuncture

pressure after removing

- single handed
- ribbon

type of puncture needle:

Type of dressing after removing:

- selfadhesive pad:.....
- Compress:.....
- brace:.....

Please mark the picture lines:

- red pointed line ... = arterial line of puncture
- blue dashed line ---- = venous line of puncture
- black lines ///// = no puncture in this area

For button hole puncture please describe the correct arm- and handposition, the depth and direction of puncture. If available, please supply a photograph.

Additional information about the shunt situation:
Complications?